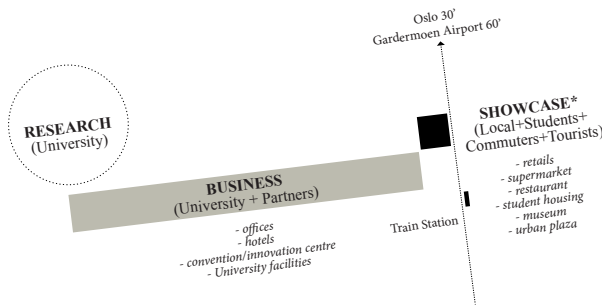


## “All eyes on Ås”

Youth and culture are the most important patrimony of a Nation. The planning of the future Ås cannot miss the call to integrate and interbreed the city life with the positive vibrations from UMB. The scientific research needs to be directly linked to the business world to promote itself and grow. Ås has now the opportunity to intensify locally to expand worldwide.

STUDENT LIFE : AS COMMUNITY = RESEARCH/BUSINESS : WORLD

### (Local Food) Research&Innovation Hub

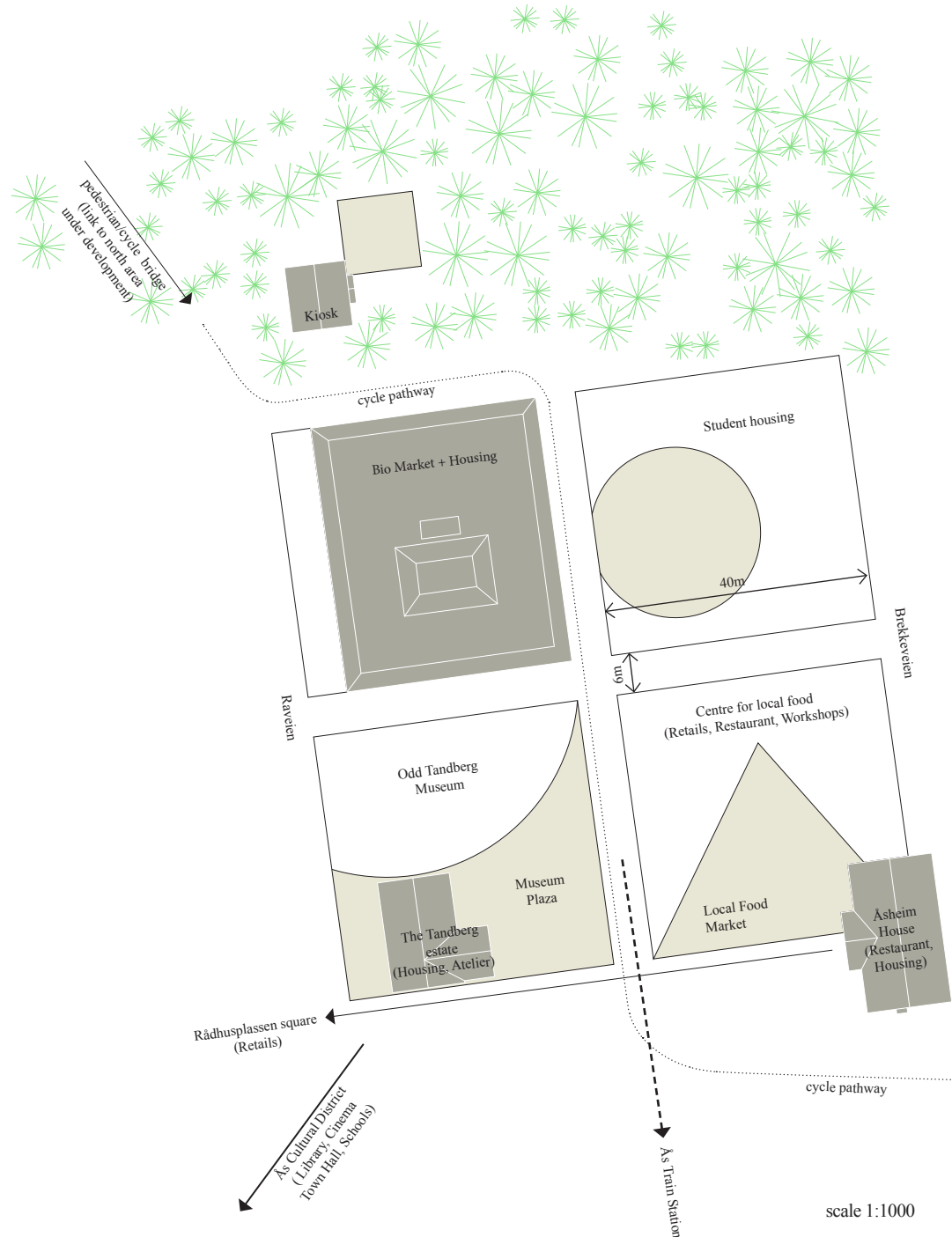


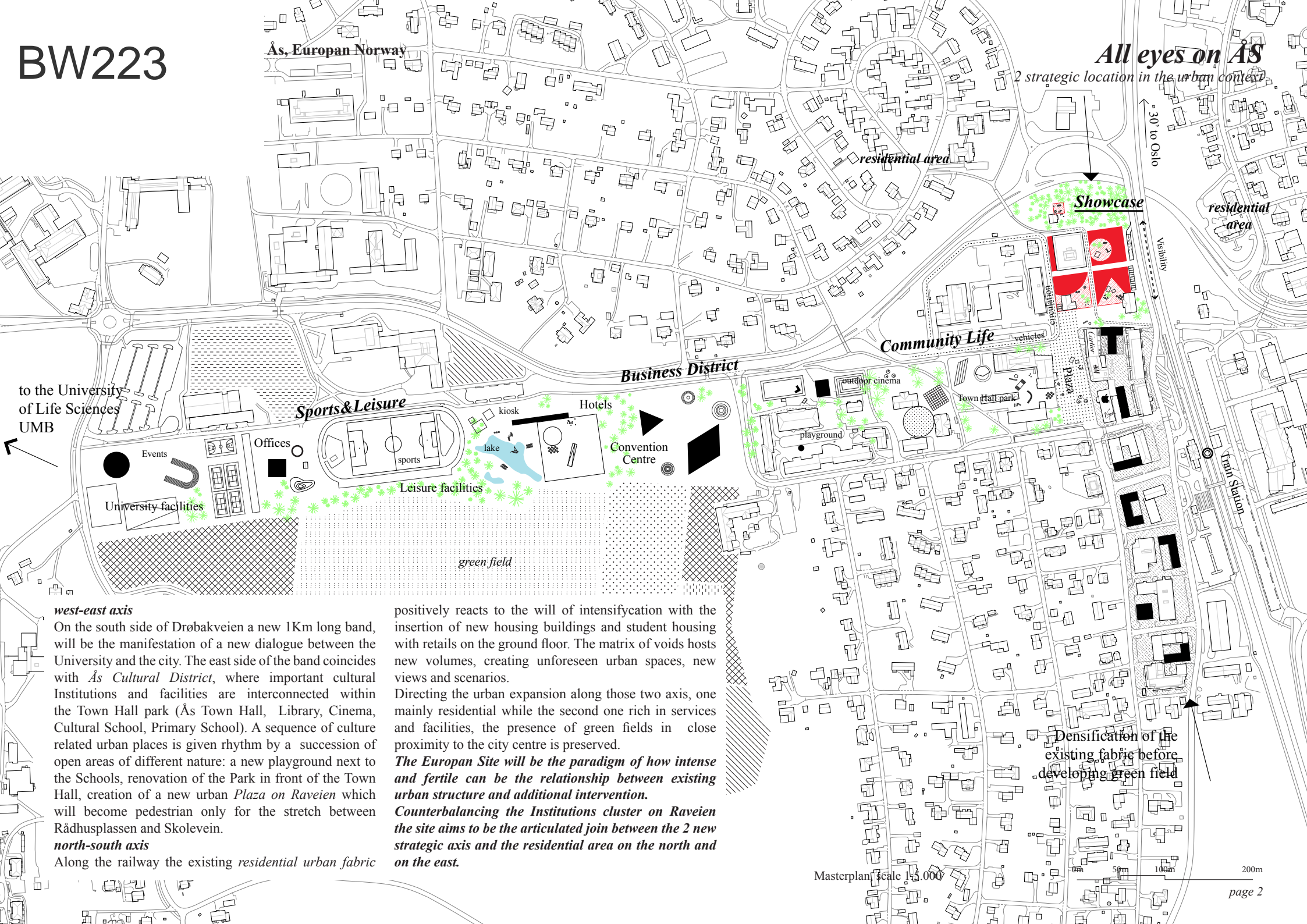
\* Centre for the urban life of local and university communities - Regional network node display of “Local Food Research&Innovation Hub”.

The Norwegian University of Life Science will be connected to the centre of Ås through a strong characterised band with facilities, offices, hotels and the new innovation center. On the right end, Ås central square will open on the European Site.



The project, gate to the city, is the showcase of the (Local Food) Research&Innovation Hub. Locals, commuters and visitors will find here the pulsing crosspoint of the town, art, trade, university and community.





to the University of Life Sciences UMB

**Sports & Leisure**

**Business District**

**Community Life**

**Showcase**

**west-east axis**

On the south side of Drøbakveien a new 1Km long band, will be the manifestation of a new dialogue between the University and the city. The east side of the band coincides with *Ås Cultural District*, where important cultural Institutions and facilities are interconnected within the Town Hall park (Ås Town Hall, Library, Cinema, Cultural School, Primary School). A sequence of culture related urban places is given rhythm by a succession of open areas of different nature: a new playground next to the Schools, renovation of the Park in front of the Town Hall, creation of a new urban Plaza on Raveien which will become pedestrian only for the stretch between Rådhusplassen and Skoleveien.

**north-south axis**

Along the railway the existing residential urban fabric

positively reacts to the will of intensification with the insertion of new housing buildings and student housing with retails on the ground floor. The matrix of voids hosts new volumes, creating unforeseen urban spaces, new views and scenarios.

Directing the urban expansion along those two axis, one mainly residential while the second one rich in services and facilities, the presence of green fields in close proximity to the city centre is preserved.

**The European Site will be the paradigm of how intense and fertile can be the relationship between existing urban structure and additional intervention.**

**Counterbalancing the Institutions cluster on Raveien the site aims to be the articulated join between the 2 new strategic axis and the residential area on the north and on the east.**

Densification of the existing fabric before developing green field

**“Quadrivio degli Angeli”, Ferrara**

The quadrivium is the crossroads between Corso Ercole d’Este and Corso Porta Mare - Corso Biagio Rossetti designed by Biagio Rossetti in the first modern city plan, *Addizione Erculea I* (1492-1510). The architect assigned to each palace located at one of the four corners a different, but well-defined architectural weight with the aim of making them all stand out distinctly at the same time.



Ferrara city plan, Andrea Bolzoni, 1794

## Ås Quadrivium a paradigm for future Ås transformation



The existing buildings are all preserved. Each of them will characterise functionally and morphologically one of the 4 four corners of the site. The formal variety is reached addressing each corner as a singularity. A tangent curve to integrate Odd Tandberg house with the new museum. A new facade is provided for the MEGA building that will be renovated to accommodate housing apartments. For the student house an inner courtyard opens on the central axis. A public plaza is cut in front of Åsheim house.

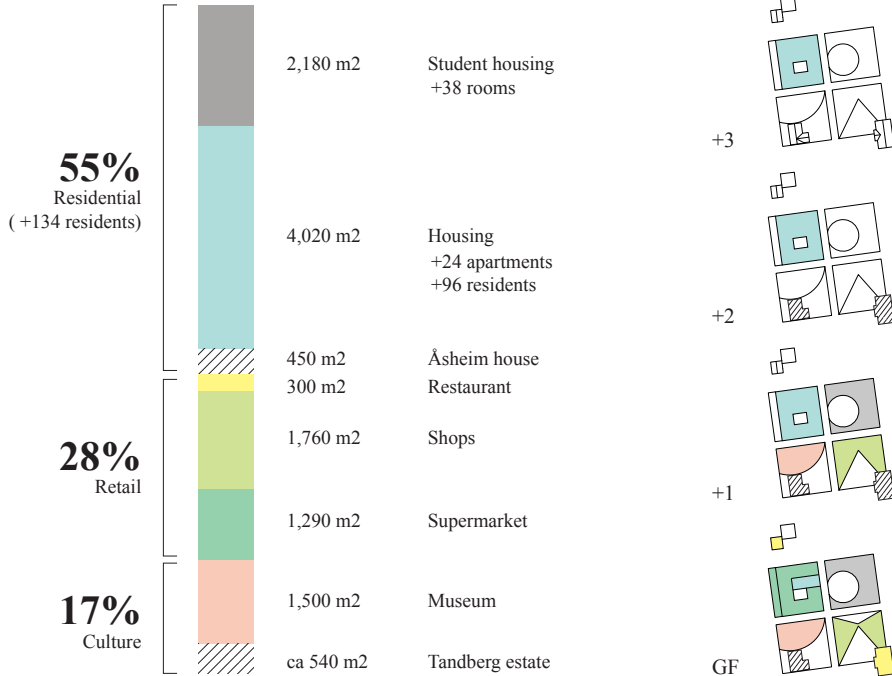
The site has a direct and ambitious **programmatic mix**. Housing, student housing, retail, restaurants, museum and workshops are facing one to each others, **interbreeding their open spaces** in a dynamic and differentiated crossing point. Promoting activities related to Local Food the site reveals the major actors of Ås framework: Agriculture, Science Research and Rural Context. University's attitude of sharing and exchanging is transferred into the site to create new urban synergies, to experiment new public spaces.



Aerial view



View from Raveien, Sculpture Garden and Food Plaza merging with Raveien Plaza



Program distribution

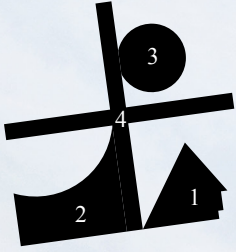
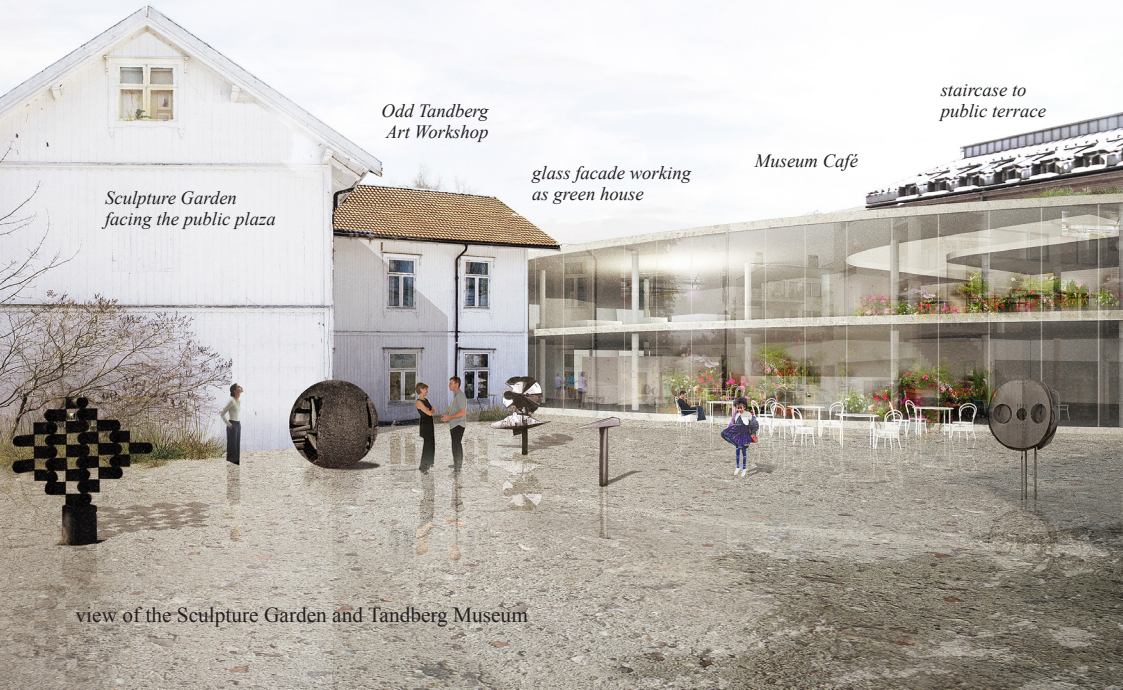


Diagram of the open areas  
(1 Plaza, 2 Garden, 3 Courtyard, 4 Alley)

preservation and integration  
of Odd Tandberg Estate



Sculpture Garden  
facing the public plaza

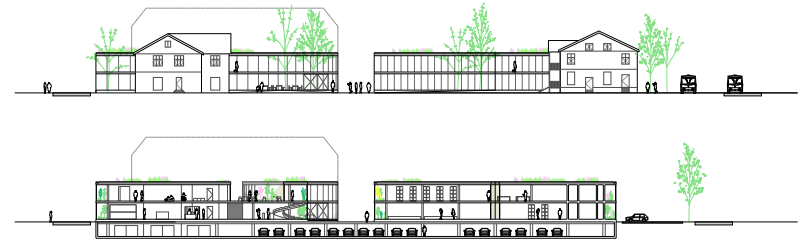
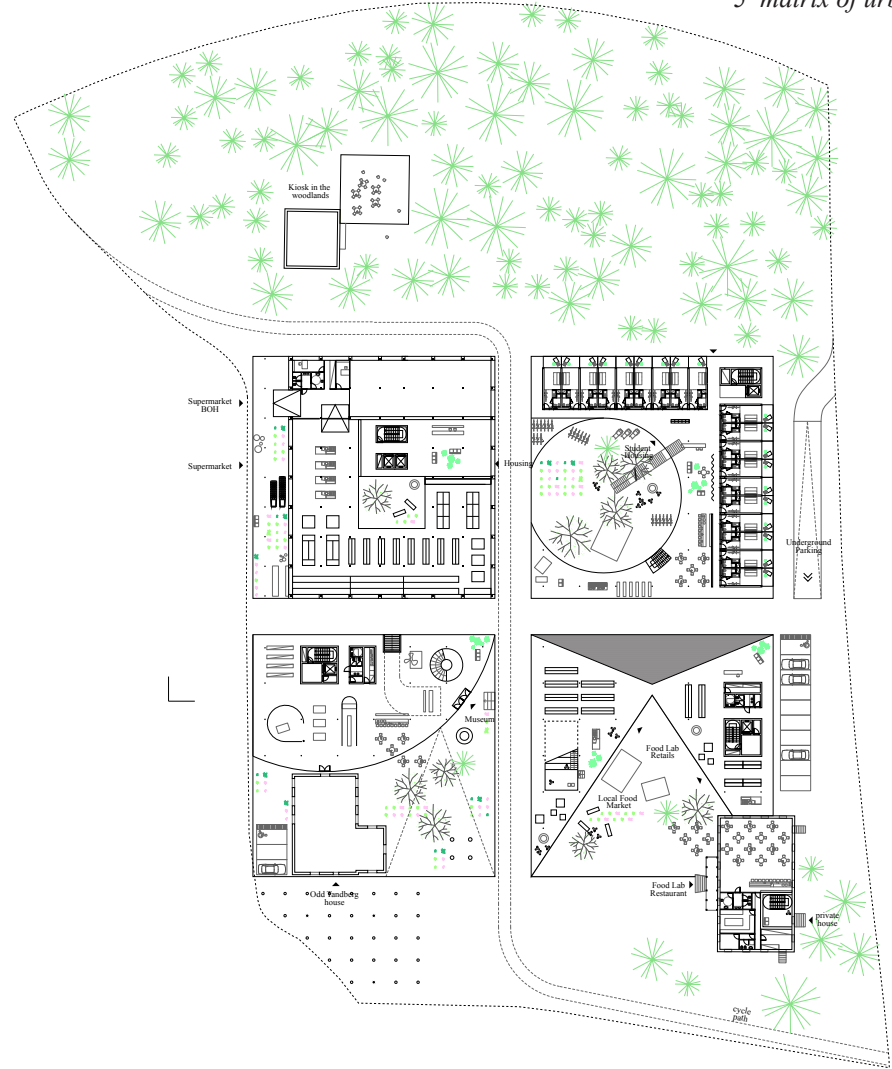
Odd Tandberg  
Art Workshop

glass facade working  
as green house

Museum Café

staircase to  
public terrace

view of the Sculpture Garden and Tandberg Museum



Scale 1:1250

0m 5m 10m 25m



8 AM Commuters have breakfast at Åsheim Café



10 AM Oslo School group visits Odd Tandberg Museum



12 PM Business lunch at Åsheim Restaurant



3 PM Local Food Workshop at Kitchen Lab



4 PM Shopping with friends



5 PM Art Workshop in the Sculpture Garden

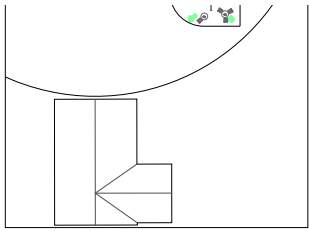


5PM A couple goes shopping for dinner in the Supermarket



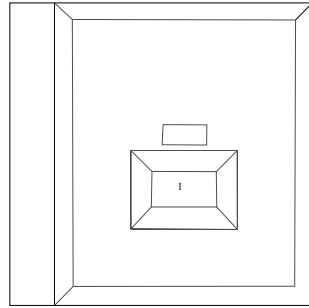
9 PM Open Air Cinema in the park next to the student housing





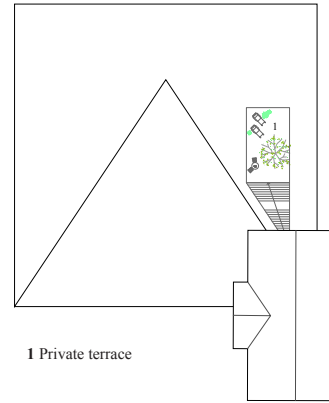
+2

1 Public terrace



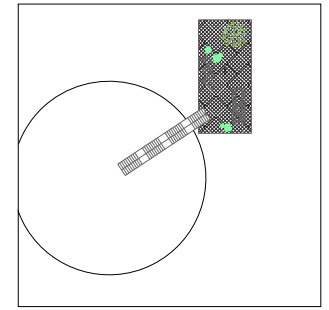
+4

1 Skylight



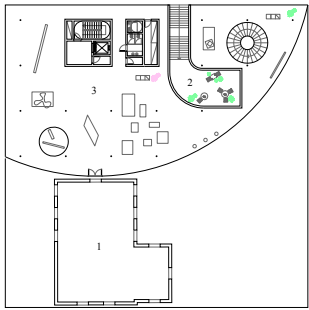
+2

1 Private terrace



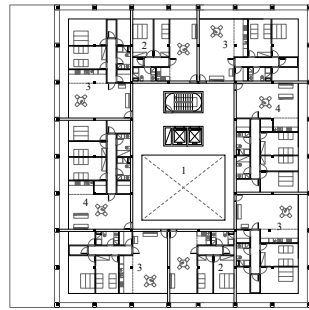
+2

1 Shared terrace



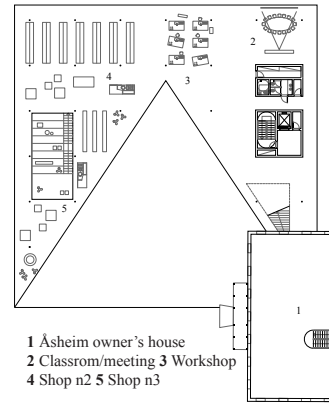
+1

1 Odd Tandberg house 2 Public terrace  
3 Exhibition space



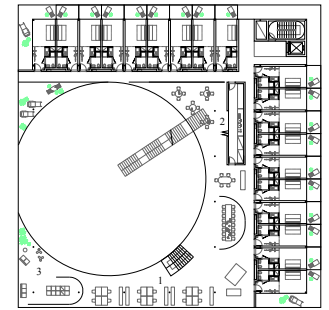
+1, +2, +3

1 Atrium 2 Apartment 3P 3 Apartment 4P  
4 Apartment 5P



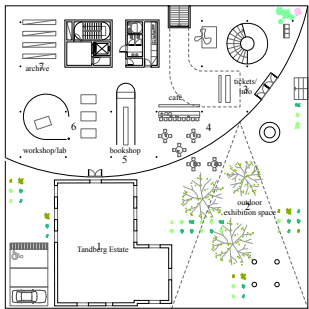
+1

1 Åsheim owner's house  
2 Classroom/meeting 3 Workshop  
4 Shop n2 5 Shop n3



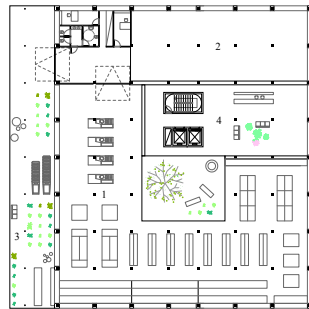
+1

1 Study room 2 Shared kitchen 3 Laundry



**Odd Tandberg  
Museum**  
GF

1 Odd Tandberg house 2 Outdoor exhibition  
space 3 Tickets/Info 4 Café 5 Bookshop 6  
Workshops 7 Archive (level GF and -1)



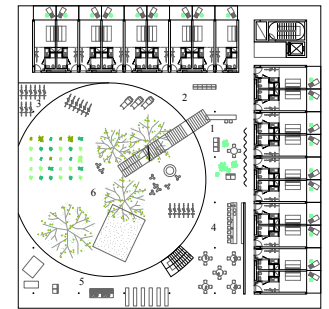
**Bio-market &  
Apartments**  
GF

1 Bio-market 2 Back of house 3 Flowers/Plants  
shop 4 Housing lobby



**Food Lab**  
GF

1 Restaurant 2 Shop n1  
3 Kitchen Lab lobby 4 Shop n2  
5 Shop n3 6 Food Market Plaza  
7 Private entrance



**Student  
Housing**  
GF

1 Lobby 2 Mail boxes 3 Cycle parking  
4 Cafeteria 5 Barbecue 6 Courtyard

scale 1:1000

0m 5m 10m 25m