

UF510

Ås' challenge

Ås has an agricultural cluster of world class. The city needs to be strengthened with new jobs, to balance workplace growth geographically. There is a need to increase activity and thus the density in the center to boost its qualities, thereby also for businesses, workers and students.

Science education should be developed among pupils and students to ensure that Ås remains a good host for business.



fig. 01 Redefining borders

Improved education must be accompanied by strengthening of the center's qualities as a city, as a generator for learning, exploration and activity.

Objectives

Our main objective is to transform Ås into a "knowledge city" by strengthening the cooperation between research groups, teaching actors, culture, industry and public stakeholders

In order to achieve this, we need to ensure that study facilities in Ås are further developed and are an important part in the future college and University structure.

As city centre needs to be attractive to business, culture and residence.

With our proposal we will develop and demonstrate the potential of interaction among technology, life science, art and culture

Urban strategy

Ås needs to define its identity on the edge between rural and urban. The low rise development have been slowly contaminated by large blocks without a clear organisation and this new high dense area lacks identity and clear guide lines to develop it further (fig. 01).

Our proposal redefine the edges between urban an rural. It creates a well define edge between them, in order to emphasize the quality of both landscapes.

A green cultural corridor creates a strong link between UMB and the city centre.

It is designed as a car-free area in which pedestrian and bicycles users can move freely.

It works as a green buffer zone between car traffic and agricultural fields.

This area absorbs existing public infrastructure and will host new functions that will be necessary for the future growth of the city.

Allotment gardens for the new citizens will play an important role in the new corridor. They will activate the use of this area and could enhance the local food culture of the region, characterized by niche products and local trade.

A new High-dense housing strip perpendicular to the green corridor will cover the housing demand of the coming years.

It is defined by a clear grid structure that runs towards the north of the city territory.

A broad variety of housing typologies are contained between the contour walls. Outside these walls a green forest remains intact.

Road infrastructure

Our aim is to create a car-free city centre. The green corridor will be therefore a place for pedestrians, bicycle users. A place to sport, to relax, to walk, to enjoy culture. A meeting point, a retreat area.

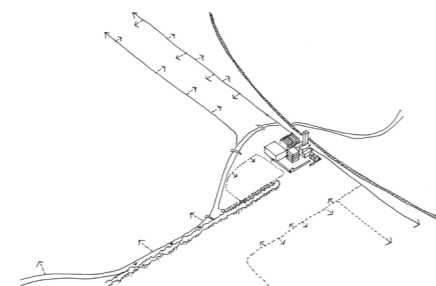


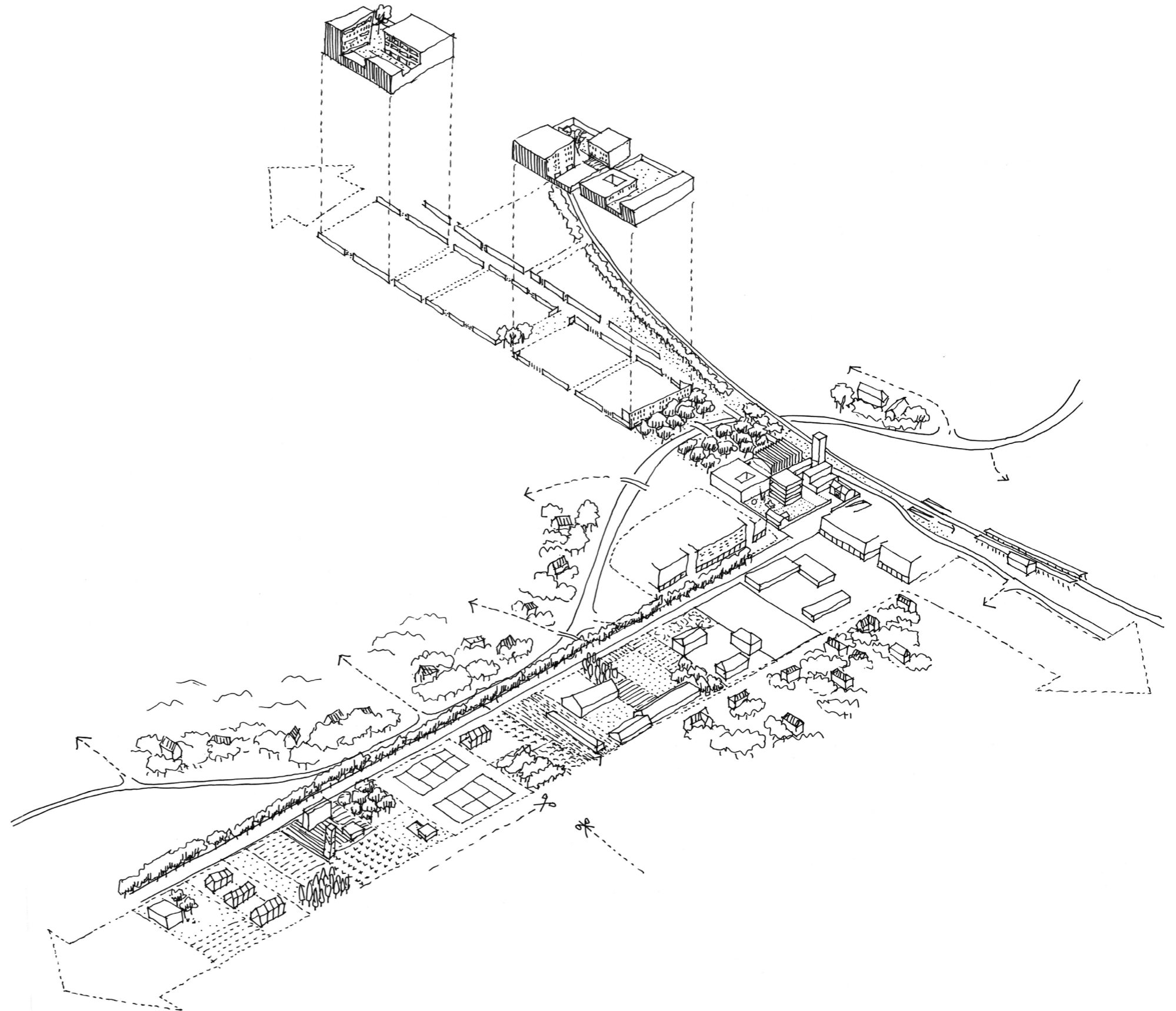
fig. 02 Road infrastructure proposal

The existing network will be reinforced with new roads that connect the northern new development with the city (fig. 02).

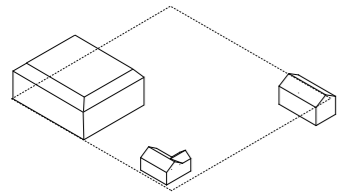
Hortus Conclusus

We propose a cultural garden located in our project site. It will contain key program to ensure the future growth of Ås.

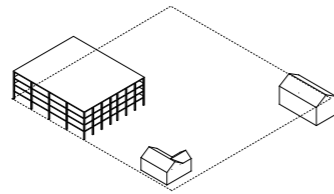
It is the anchor point between the two new axis of the city. An "hortus apertus" for the city, an "hortus conclusus", a secret garden for its users.



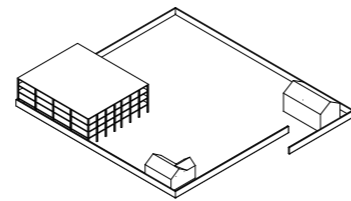
UF510



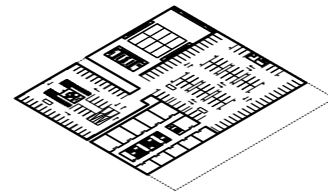
1. current situation_preservation



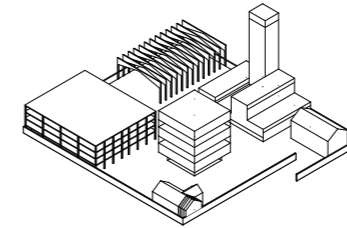
2. light demolition_facade Mega



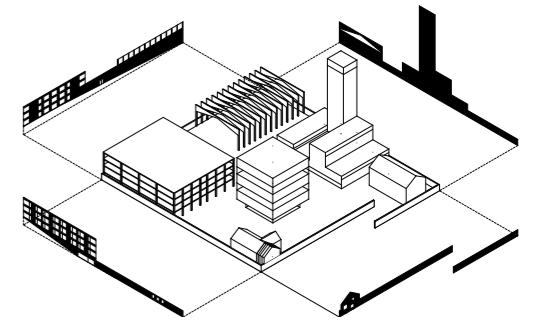
3. wall hortus conclusus



4. parking



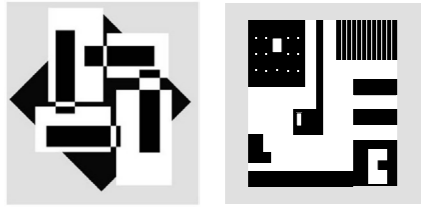
5. new buildings



6. new ensemble



UF510



Our aim with the proposed program is to facilitate new ways of working, learning and innovating and give an answer to the future growing demands of Ås.

The project provides a basis for both the professional and organizational cooperation between education stakeholders, industry and other stakeholders. It creates significant synergies (professional, resource, economic) through the joint use of areas and meeting places for business, culture and university.

Our garden is an arena that is perceived as open, diverse and inclusive for all groups, a meeting place for people from different nations and cultures.

Hortus Conclusus, a factory of culture

Our project consists of a series of volumes that complete the mass composition once started by Åsheim house, Tandberg estate and Mega-block.

Like in the Odd Tandberg paintings, a subtle change defines the transition between inside and outside.

The mass as important as the void.
 Built equal to unbuilt.

Each volume as a unique character in the composition.

Each volume with a unique role.

They can no longer exist without each other.

Entrance pavilion

The entrance pavilion and visitors centre is located in the existing Åsheim house. The upper floor will keep its residential use.

Artist in residence

In order to keep the production of Art on site, we propose to maintain the Tandberg estate and transform it into an *Artist in residence* home.

Artist will be invited for certain periods to live and work in Tandberg's house. A long glass gallery facing the beautiful garden will be a place to show and express their art works.

The **Tandberg Museum** is a central element in the composition. It has two floors dedicated to the work of Odd Tandberg, two extra floors for temporary exhibitions and a museum cafe on the top floor. The Artist in residence home is located nearby in order to create a synergy between both buildings.

The **learning and innovation centre** will have a multi-functional perspective, both in the University profile, faculty needs, the totality of the knowledge and Ås as a city. It is organized by a series of volumes next to each other which contain different functions: Meeting rooms, reception-lounge area, cafe-restaurant, library, congress area and hotel.

The **Arena / Magic box** will be the meeting place that highlights the values of cooperation and will be inviting, inspiring and vibrant.

The magic box is a common arena for random and scheduled meetings between people, a place where you can go to find warmth, joy, people, good experience affiliations, including those you did not know about, for a good conversation, discussions, an activity or where there are 600 people during a performance. It's about a vibrant space to be in and an atmosphere that invites staying and participation, curiosity and impulses between the learning centre, library, student facilities and a development-oriented community.

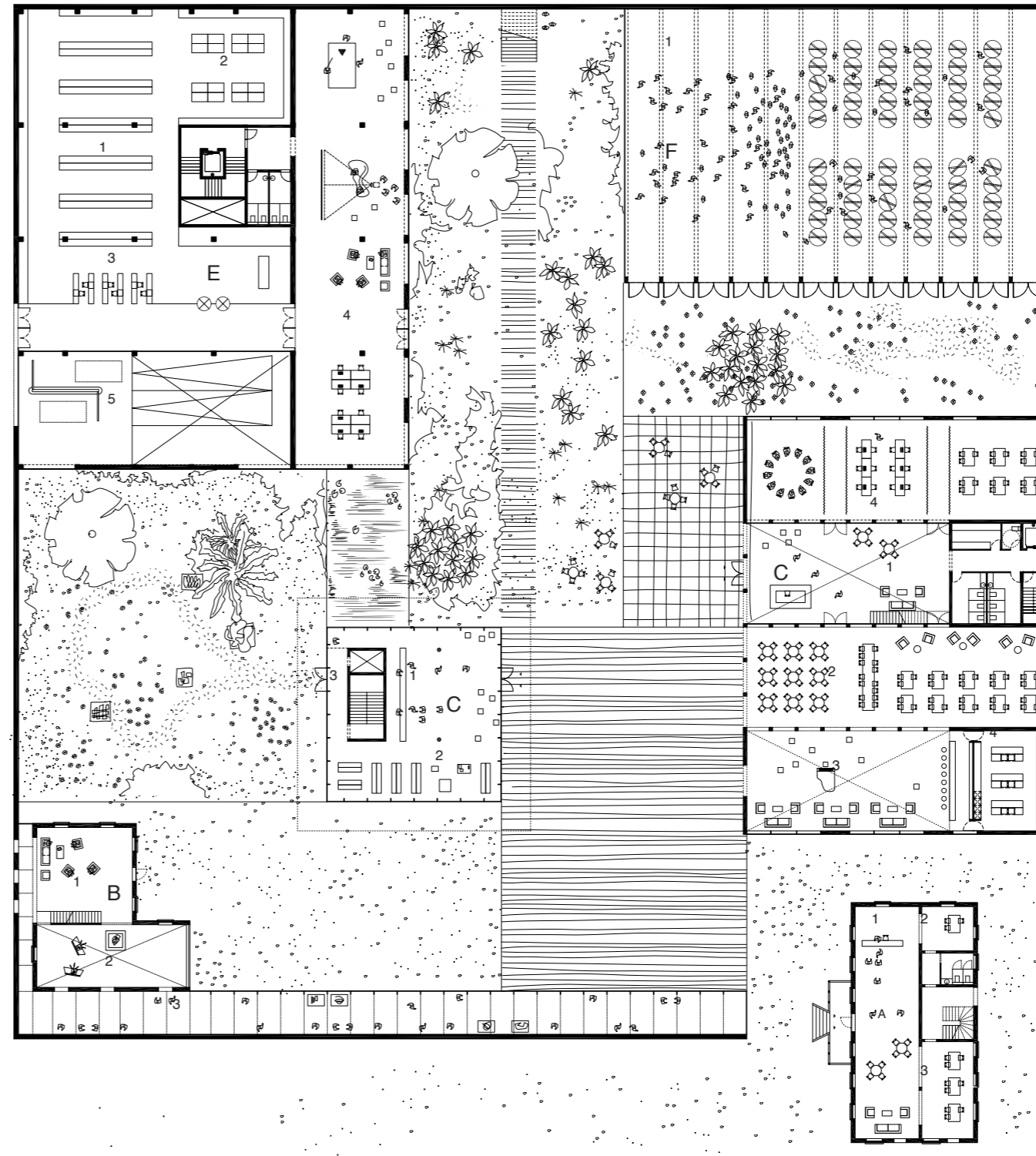
The **student housing** is located on the existing "Mega" office building. All structural elements will be kept. The new facade proposed unifies the whole ensemble. 72 rooms varying in size from 26 m² to 44 m² are distributed over three floors.

On ground floor, facing the garden a series of meeting and relaxation rooms connect the residence with the whole complex.

A **supermarket** is located in the same location of the current one. It has a main access through the Raveien street and a secondary access directly from the garden.

Parking

In order to assure the good work of this complex, we propose an underground parking that compress the existing parking under the Mega-building (36 pp) and a new one with 90 parking places under the new buildings. Archive, storage space and bicycle storage are also located in this level



A entrance pavilion Hortus Conclusus

1. infocenter
2. office
3. mediatheque

B Artist in Residence

1. reception
2. atelier
3. gallery space

C Tandberg Museum

1. ticket sales
2. museum shop
3. entrance sculpture garden

D learning center

1. reception learning center / hotel
2. restaurant
3. cafe
4. kitchen

E supermarket / student housing

1. groceries
2. fruit
3. counters
4. meeting point student housing
5. entrance parking garage

F magic box

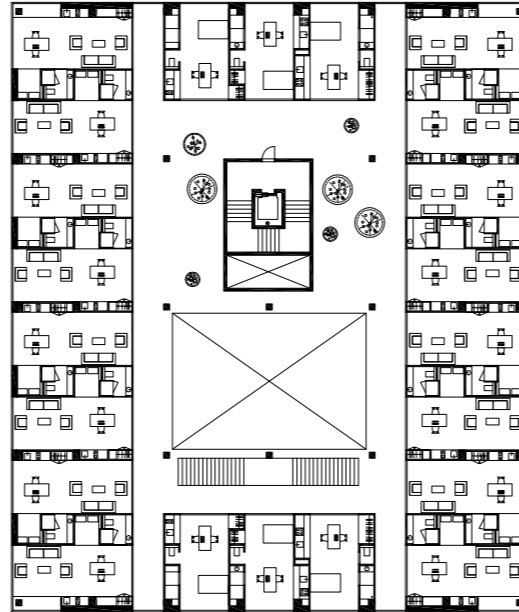
1. big exposition layout

floorplan ground floor

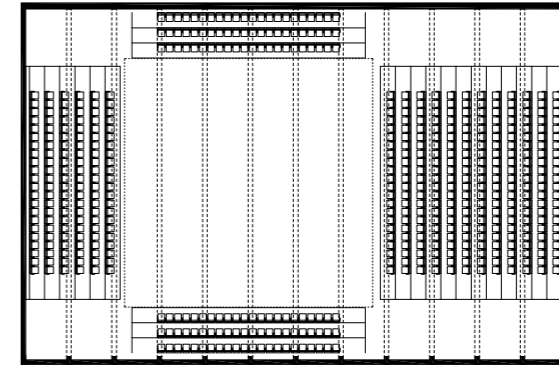
scale 1: 500



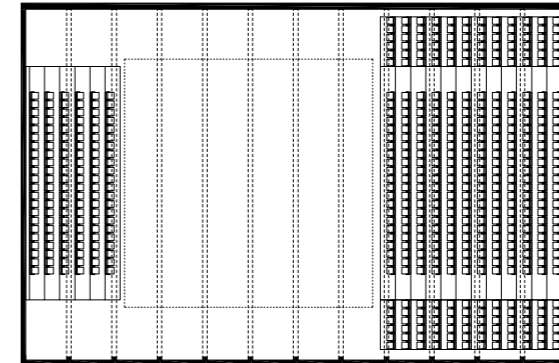
UF510



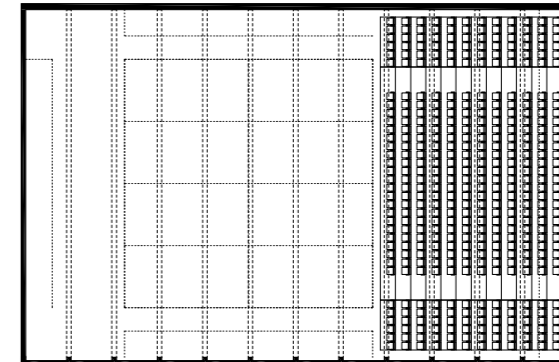
+2: student housing



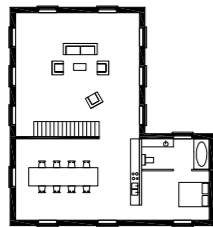
playroom configuration



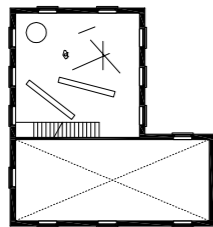
two sides configuration



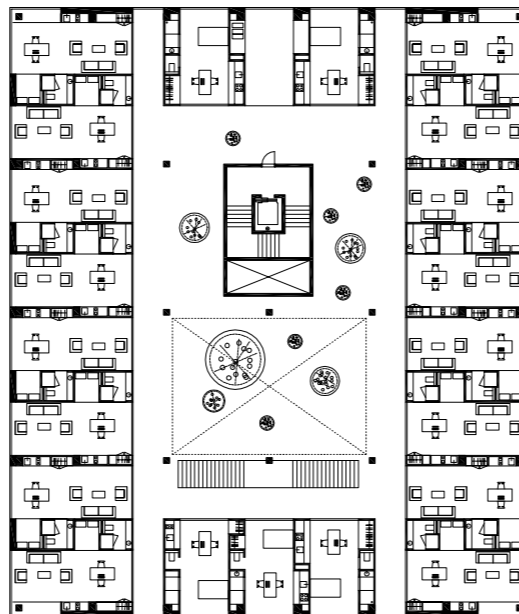
standard configuration



+2: residence artist



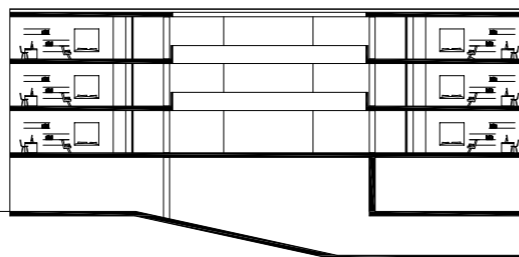
+1: open atelier



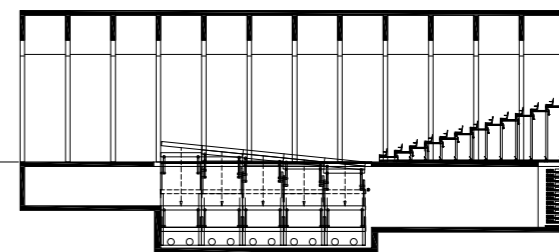
+1: student housing



'Artist in Residence'
total gross floor areas: 300 m² + 247 m² gallery

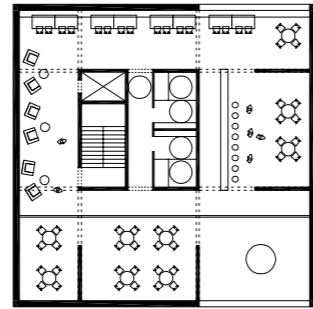


Student housing
gross floor area: 4.171 m²

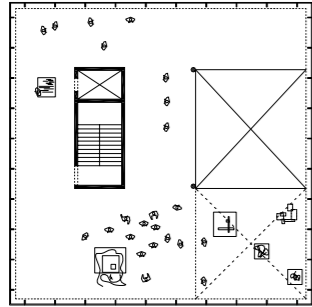


Magic Box
gross floor area: 870 m² volume 8.700 m³

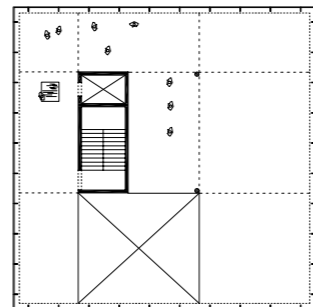
UF510



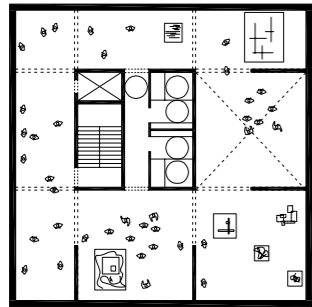
+5: museum cafe



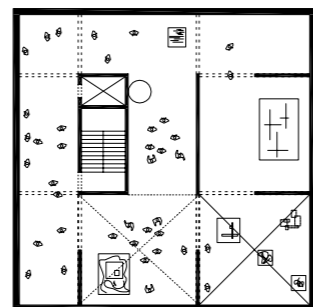
+2: permanent sculpture exhibition



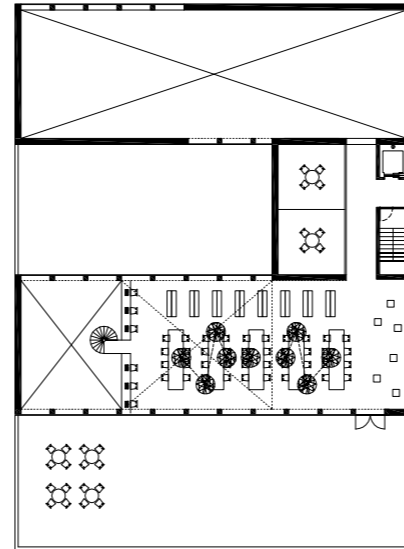
+4: temporary sculpture exhibition



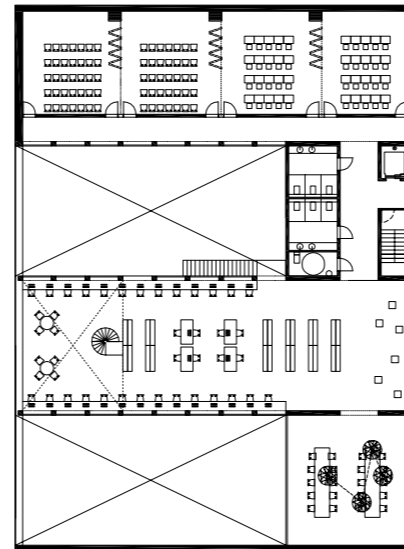
+1: permanent paintings exhibition



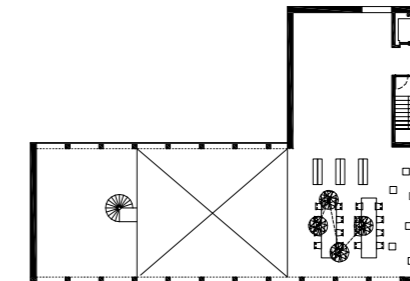
+3: temporary paintings exhibition



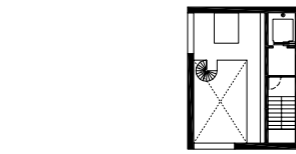
+2: library



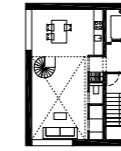
+1: library, meeting rooms



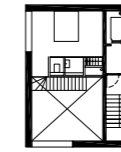
+3: library



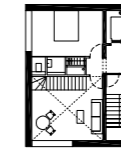
+7: hotelroom type D



+7: hotelroom type D



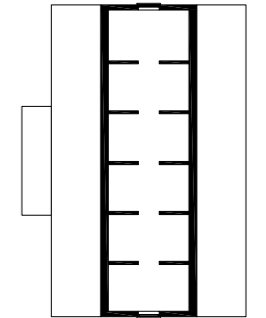
+6: hotelroom type C



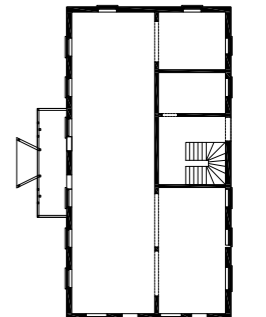
+5: hotelroom type A, type C



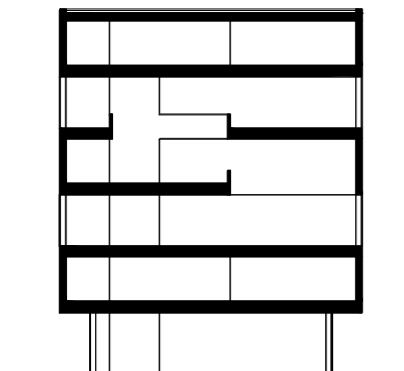
+4: hotelroom type A, type B



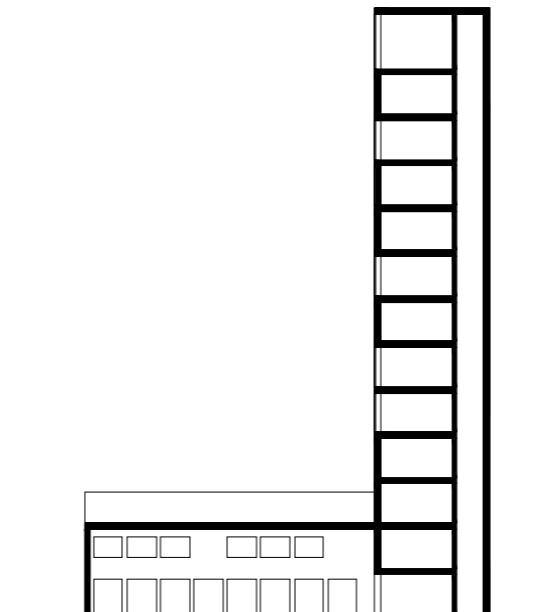
+2: housing



+1: housing



Tandberg Museum
2.225 m² + 745 m² sculpture garden



Learning Center / Hotel
2.735 m²



Entrance pavilion / Housing
450 m²

UF510



view from Tandberg Museum towards learning center and magic box